

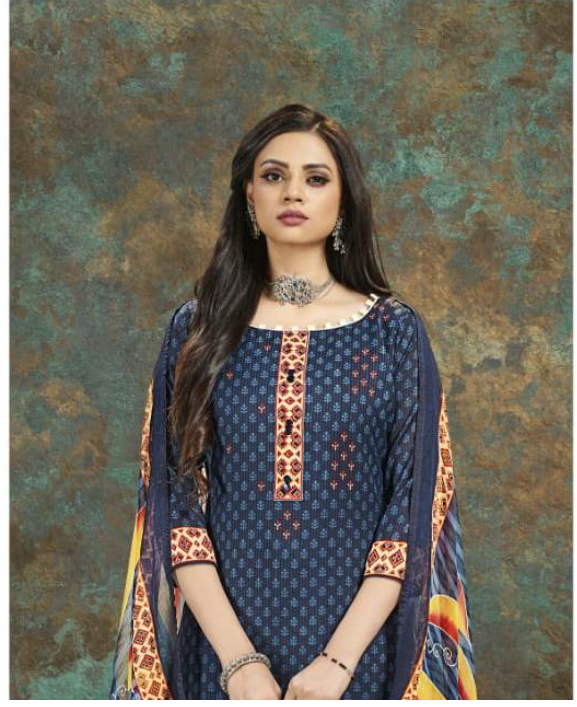
Always No.1

A PRODUCT BY **Gipson**[®]

ਨਾਜ਼
ناز
NAAZ

Design No :- 1302 to 1309

Top :- Cotton Slub Print With Work.
Bottom :- Pure Cotton Dyed.
Dupatta :- Nazneen Print.





Gipson[®]



EARTHLY MAGIC

She combines the magic of ages past with the panache and look of the future. Her spells break your defences and leave you senseless, captivated by the charms of her immaculate Saree. She is the Modern Enchantress and she is here to win you over!









In love: "I have made it in love in my garden. But we look at you, that is your biggest garden and the heart does, the pain goes on and never leaves your side. You are living the same side."

1303

The Fanna Fatah





The Unnikchand Easwar

My my love's
melody, sweet
and, her lips
to her eyes, I
to her smile,
to her hair,
to her skin,
to her voice,
to her touch,
to her heart,
to her soul,
to her love,
to her life,
to her death,
to her everything.



1305







1302



1303



1304



1305



1306



1307



1308



1309



Gipson®

ਨਾਜ਼
NAAZ

The Magazine Covergirl

The magazine follows her everywhere and goes. The camera can't get enough of her glit and glamor. Every magazine dreams of having her as their cover girl. And in that column there.



1309





The Soukhata

The woman the
eyes of your path
with the promise and
look of the future.
Her smile is your
effort and her gaze
is your hope, captured
by the stars of her
unforgettable smile.
She is the Mother
Earthliness and she
is here for you
and!



1307



The Modern Enchantress



The woman has
a sense of style and
is the perfect
blend of the old
and the new.
She is the
perfect blend of
the old and the
new. She is the
perfect blend of
the old and the
new. She is the
perfect blend of
the old and the
new.

1302

