



MUGDHA®

MUGDHA®



#1505



MUGDHA

#1505



MUGDHA®



#1506



MUGDHA®

#1506





MUGDHA®

#1507



#1501



#1502



#1505



#1506



#1503



#1504



#1507

MUGDHA



DESIGN NO.	DESCRIPTION	WORK DETAILS	USP	RATE
1501	TOP : PURE TUSSAR SILK INNER : PURE COTTON BOTTOM : PURE TUSSAR SILK DUPATTA : PURE SILK ORGANZA	ZARI & RESHAM EMBROIDERY, HAND WORK BEADS	UNIQUE CONTRAST MATCHING, FOR SOBER & RICH PEOPLE, 4 SIDE SCALLOP DUPATTA	1280
1502	TOP : PURE TUSSAR SILK INNER : PURE COTTON BOTTOM : PURE TUSSAR SILK DUPATTA : PURE SILK ORGANZA	ZARI & RESHAM EMBROIDERY	STUNNING RUST COLOR WITH MILK CHOCOLATE DUPATTA, 4 SIDE SCALLOP DUPATTA	1380
1503	TOP : PURE TUSSAR SILK INNER : PURE COTTON BOTTOM : PURE TUSSAR SILK DUPATTA : PURE SILK ORGANZA	ZARI & RESHAM EMBROIDERY	PANNEL CUTS IN TOP FOR PERFECT FIT, TURKISH COLOR MATCHING, 4 SIDE SCALLOP DUPATTA	1370
1504	TOP : PURE COTTON JAM SATIN BOTTOM : PURE COTTON JAM SATIN DUPATTA : PURE ORGANZA SILK DIGITAL PRINT	HAND WORK YOKE	COLOR OF ALL SEASON, WITH MOULDED HANDWORKED YOKE	1275
1505	TOP : PURE TUSSAR SILK INNER : PURE COTTON BOTTOM : PURE TUSSAR SILK DUPATTA : PURE SILK ORGANZA	SHARP CORDING WITH HAND APPLIQUE WORK, TASSELS	MATCHING SPEAKS, 4 SIDE SCALLOP DUPATTA	1335
1506	TOP : PURE MODAL CHANDERI DIGITAL PRINT INNER : PURE COTTON BOTTOM : SLUBBY SILK DUPATTA : PURE SILK ORGANZA	CHAIN STITCH WORK WITH SEQUINS	FRESH RED COLOR IS AT BEST, 4 SIDE SCALLOP DUPATTA	1215
1507	TOP : PURE COTTON SILK BOTTOM : PURE COTTON SILK DUPATTA : PURE SILK ORGANZA	HAND TABLE PRINT WITH HAND EMBROIDERY BEADS & RESHAM	4 SIDE RAFFLE DUPATTA, WITH UNIQUE MATCHING	1340

NUMBER OF PIECES : 7 | FULL SET AMOUNT : 9195/- | AVERAGE PRICE : 1314/-

MIRAYA BY MUGDHA

MUGDHA[®]

Miraya





MUGDHA®



#1501

MUGDHA



#1501



MUGDHA®

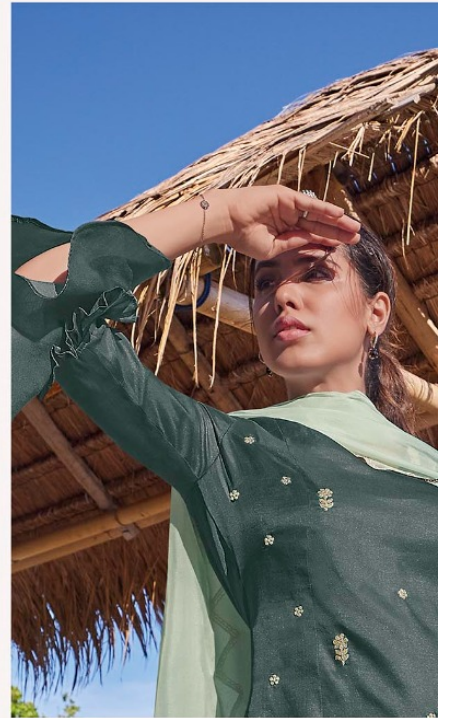


#1502





MUGDHA
#1503





MUGDHA®



#1504





#1504