

A woman with long, dark, wavy hair is looking thoughtfully at a display of jewelry. She is wearing a vibrant green saree with a matching blouse that has intricate floral embroidery. Her accessories include large, ornate earrings, a ring, and a matching green bangle. The jewelry she is looking at is displayed on a circular wooden board, featuring various styles of earrings in gold, silver, and mixed metals. The background is a blurred shop interior with colorful fabrics and hanging tassels, suggesting a traditional Indian market or jewelry store.

Kalaroop

Zarkan by Patiyala

A woman with long, dark, wavy hair is looking thoughtfully at a display of jewelry. She is wearing a vibrant green saree with a matching blouse that has intricate floral embroidery on the sleeves. Her accessories include large, ornate earrings, a ring, and a matching green bangle. The jewelry she is looking at is displayed on a circular wooden board, featuring various styles of earrings in gold, silver, and mixed metals. The background is a blurred shop interior with colorful fabrics and hanging tassels, suggesting a traditional Indian market or jewelry store.

Kalaroop

Zarkan by Patiyala



UNDERSTATED GLAM

The season look up with some truly inspiring & elegantly

• 13038 •



Preference
DELIGHTFUL



What is remarkable about season's offering is the interpretation of natural base with fashion and Activity Details.



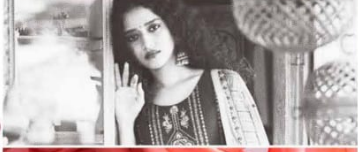
TIMELESS CHARISM



Simple without letting go of elegance & tradition with natural fabrics
• 13033 •



ELEGANT INDULGENCE



Other designs of this series available in different colors and patterns. For more information, visit our website at www.13034.com

• 13034 •



• 13036 •
Brilliant hues & lustrous textures give you a new makeover this season

HEARTWARMING SHADES





FASHION QUEEN



Brilliant hues & lustrous textures give you a new makeover this season





CELEBRATE MOMENTS

Simple without losing so of elegance & tradition with natural fabrics
• 13037 •





13033

13034

13035



13036

13037

13038