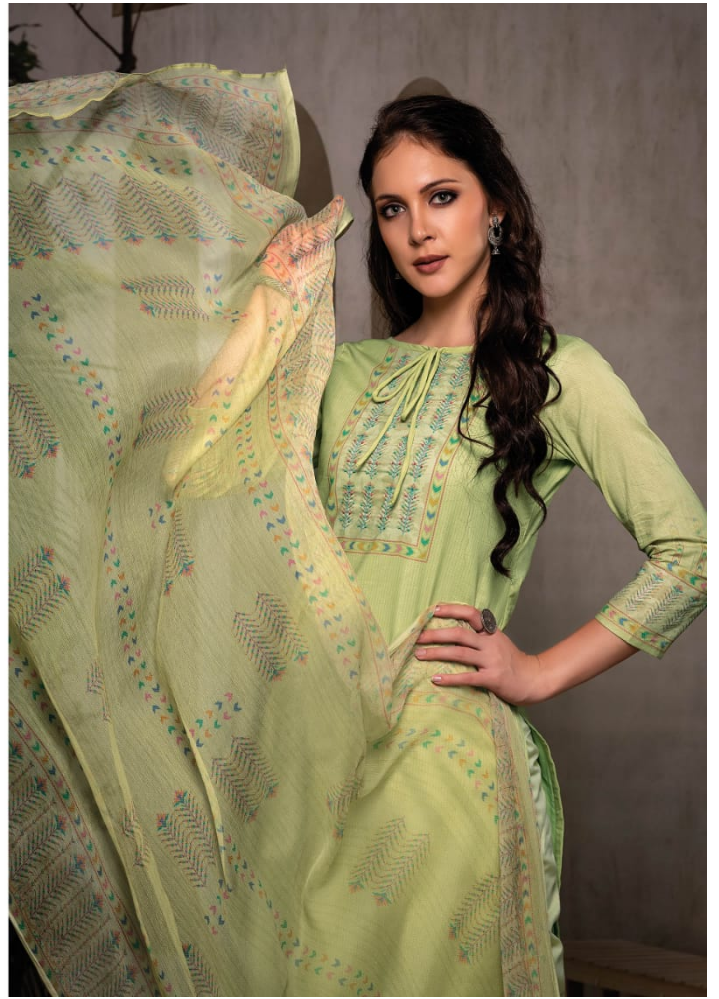


*Rivāā*





.1786.



A woman with long, dark, wavy hair is shown from the chest up, wearing a teal and beige patterned outfit. The outfit features intricate floral and geometric patterns in red, blue, and gold. She is wearing a large, matching shawl or dupatta that is draped over her shoulders and flows down. The background is a simple, light-colored wall with arched doorways. The word "Rivāā" is written in a red, cursive font in the upper right corner of the image.

*Rivāā*

INAYAT

A woman with long, dark, wavy hair is shown from the chest up, wearing a teal and beige patterned outfit. The outfit features intricate floral and geometric patterns in red, blue, and beige. She is wearing a large, matching shawl or dupatta that is draped over her shoulders and flows down. The background is a simple, light-colored wall with arched doorways. The word "Rivāā" is written in a red, cursive font in the upper right corner of the image.

*Rivāā*

INAYAT



.1791.



.1787.





.1790.





.1789.





.1788.





.1785.



TR 1785



TR 1786



TR 1787



TR 1788



TR 1789



TR 1790



TR 1791